

Marriages and Dissolutions of Marriage

MARRIAGES AND DISSOLUTIONS OF MARRIAGE

- The number of marriage ceremonies increased from a total of 154,453 in 2004 to a total of 158,192 in 2005.
- The marriage rate per 1,000 persons increased slightly each year from 1999 to 2002. It dropped in 2003 and then dropped again in 2004. It remained constant in 2005.
- May was the most popular month for marriages with 15,779 marriages performed.
- The number of dissolutions of marriage increased slightly in 2001, and has decreased each year since then.
- Since 1980, the dissolution rate has declined 38.4 percent. There has been an overall decrease in the number of dissolutions from 2003 through 2005.
- The dissolution of marriage rate per 1,000 persons has declined yearly from 5.2 in 2001 to 4.5 in 2005.
- Of the 81,287 dissolutions of marriage in 2005, over half (57.9 percent) did not affect any minor children.
- About four of every 10 dissolutions of marriage occurred to couples who were married between 5 and 14 years.
- The marriage rate in Florida is nearly double the dissolution rate.

CHART M-1: MARRIAGES AND DISSOLUTIONS OF MARRIAGE, AND RATES PER 1,000 POPULATION, FLORIDA AND UNITED STATES, CENSUS YEARS 1920-1990 AND 1995-2005

YEAR	MARRIAGES			DISSOLUTIONS ¹		
	FLORIDA		U.S. RATE	FLORIDA		U.S. RATE
	NUMBER	RATE		NUMBER	RATE	
1920	NA	NA	12.0	NA	NA	1.6
1930	17,147	11.7	9.2	3,262	2.5	1.6
1940	32,709	17.1	12.1	11,061	5.8	2.0
1950	27,588	9.8	11.1	17,845	6.3	2.6
1960	39,315	7.9	8.5	19,326	3.9	2.2
1970	69,249	10.1	10.6	37,506	5.5	3.5
1980	108,344	11.0	10.6	71,578	7.3	5.2
1990	141,816	10.9	9.8	81,119	6.2	4.7
1995	145,090	10.1	9.1 ²	78,416	5.4	4.5 ²
1996	150,599	10.2	8.8 ²	77,750	5.3	4.3 ²
1997	158,783	10.6	8.9 ²	82,161	5.5	4.3 ²
1998	141,344	9.2	8.5 ²	80,466	5.3	4.3 ²
1999	136,403	8.7	8.5 ²	80,983	5.2	4.1 ²
2000	145,300	9.0	8.7 ²	81,439	5.1	4.2 ²
2001	153,298	9.3	8.2 ²	85,259	5.2	4.0 ²
2002	157,554	9.4	7.8 ²	85,181	5.1	4.0 ²
2003	153,023	8.9	7.7 ²	85,367	5.0	3.8 ²
2004	154,453	8.8	7.8 ²	83,306	4.7	3.7 ²
2005	158,192	8.8	7.5 ²	81,287	4.5	3.6 ²

¹ Includes divorces and annulments.

² Provisional data.

GRAPH M-1: MARRIAGES AND DISSOLUTIONS OF MARRIAGE RATES PER 1,000 POPULATION, FLORIDA AND UNITED STATES, 1995-2005

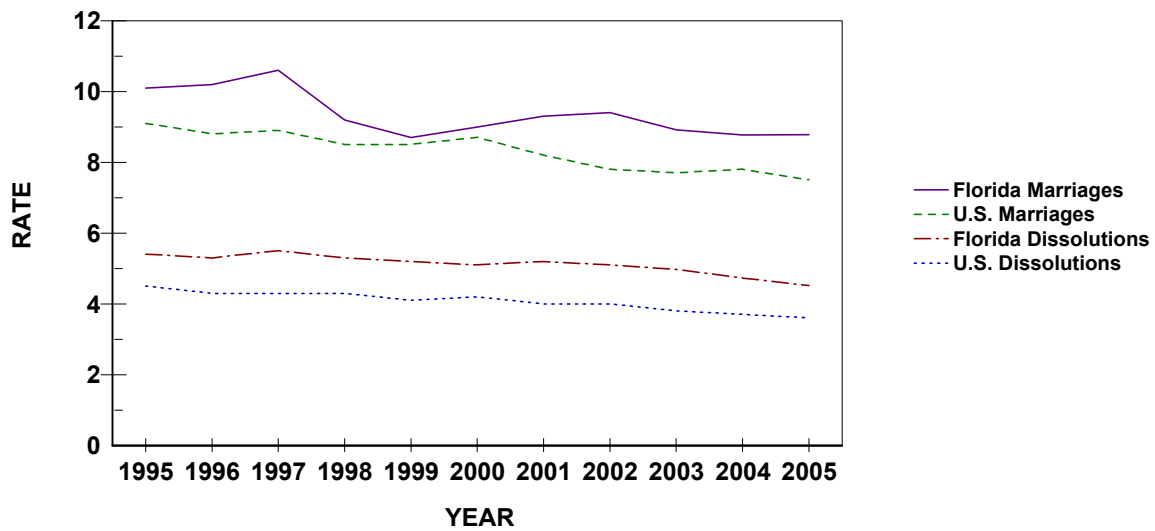


TABLE M-1: MARRIAGES PERFORMED BY MONTH, BY COUNTY OF ISSUANCE, FLORIDA, 2005

FLORIDA	TOTAL	JAN	FEB	MAR	APR	MAY	JUN	JUL	AUG	SEP	OCT	NOV	DEC
FLORIDA	158,192	9,707	12,324	13,775	15,617	15,779	14,558	14,225	11,376	11,274	13,376	13,003	13,178
ALACHUA	1,874	98	141	132	212	211	196	202	136	105	157	134	150
BAKER	255	15	20	20	22	24	36	19	22	19	17	21	20
BAY	2,343	85	137	168	252	229	266	257	229	201	221	162	136
BRADFORD	239	18	17	18	28	30	23	21	16	17	16	17	18
BREVARD	4,185	237	307	368	424	419	372	368	290	284	373	369	374
BROWARD	15,479	1,055	1,337	1,373	1,571	1,454	1,379	1,400	1,104	1,106	1,109	1,196	1,395
CALHOUN	115	7	5	11	12	15	11	4	8	14	8	7	13
CHARLOTTE	1,057	68	92	97	118	110	88	77	77	69	105	66	90
CITRUS	849	42	73	74	80	96	64	81	60	49	90	72	68
CLAY	1,466	81	111	134	175	151	146	142	99	100	117	106	104
COLLIER	3,201	196	238	251	339	340	311	277	219	191	233	311	295
COLUMBIA	549	32	41	48	47	50	54	65	34	51	48	37	42
MIAMI-DADE	26,105	1,924	2,250	2,347	2,408	2,427	2,256	2,389	1,905	1,969	1,705	2,169	2,356
DESOTO	263	20	24	31	22	20	24	10	25	11	27	26	23
DIXIE	140	9	14	14	10	12	10	13	13	10	9	11	15
DUVAL	6,378	368	414	555	628	658	614	597	482	445	630	490	497
ESCAMBIA	2,785	158	210	225	258	284	297	267	211	197	254	189	235
FLAGLER	525	23	29	32	70	58	44	46	34	38	46	52	53
FRANKLIN	147	10	6	13	15	16	11	13	19	11	11	7	15
GADSDEN	268	12	27	25	20	25	23	24	20	23	23	20	26
GILCHRIST	143	7	8	11	13	13	14	13	13	12	16	9	14
GLADES	53	3	5	2	4	7	3	4	4	3	8	7	3
GULF	163	7	9	10	16	19	23	20	14	7	15	12	11
HAMILTON	133	11	12	13	17	13	8	15	6	10	11	9	8
HARDEE	209	20	20	16	22	17	19	18	9	12	17	15	24
HENDRY	265	24	28	30	24	21	17	25	19	13	18	28	18
HERNANDO	957	56	66	102	76	93	91	76	57	73	92	91	84
HIGHLANDS	628	51	53	65	69	55	66	47	47	39	38	42	56
HILLSBOROUGH	9,979	546	795	893	954	988	874	895	727	704	936	833	834
HOLMES	186	8	15	17	20	18	18	20	17	12	15	20	6
INDIAN RIVER	925	62	83	78	94	98	82	80	60	54	80	70	84
JACKSON	345	31	23	34	29	29	36	40	29	21	22	26	25
JEFFERSON	94	4	5	8	19	10	6	6	6	9	11	5	5
LAFAYETTE	65	5	4	5	9	6	3	7	5	6	7	2	6
LAKE	2,087	127	150	170	208	228	179	182	135	168	196	175	169
LEE	4,493	251	348	386	441	461	408	404	257	312	386	432	407
LEON	1,822	99	127	174	184	202	183	165	148	122	159	133	126
LEVY	237	12	14	21	25	20	28	23	24	19	20	10	21
LIBERTY	69	5	2	7	8	5	8	7	3	4	6	7	7
MADISON	131	6	5	15	17	7	12	14	8	8	15	12	12
MANATEE	2,028	132	142	168	219	199	189	182	143	123	192	180	159
MARION	2,177	112	178	215	199	221	196	183	151	140	180	181	221
MARTIN	996	61	83	79	116	108	91	100	51	57	77	83	90
MONROE	3,002	203	258	268	347	337	294	226	189	160	203	265	252
NASSAU	664	31	37	38	64	66	75	66	64	63	62	56	42
OKALOOSA	2,928	130	154	213	260	350	343	262	293	249	311	206	157
ORKEECHOBEE	304	17	30	28	34	27	25	25	23	21	20	25	29
ORANGE	10,714	662	797	915	991	1,037	1,006	919	838	838	952	896	863
OSCEOLA	4,705	277	343	374	464	461	425	373	360	399	465	393	371
PALM BEACH	9,038	594	758	834	865	897	819	827	633	650	673	733	755
PASCO	2,474	145	207	215	266	237	199	205	151	162	254	241	192
PINELLAS	7,563	408	571	698	790	786	672	669	497	476	743	670	583
POLK	3,937	258	334	361	360	354	348	366	263	271	340	298	384
PUTNAM	531	29	48	40	53	48	52	58	45	31	46	39	42
SAINT JOHNS	1,456	67	88	107	182	169	153	132	93	99	149	113	104
SAINT LUCIE	1,516	94	116	147	159	163	127	152	105	115	98	123	117
SANTA ROSA	878	41	58	70	79	80	92	77	71	63	108	64	75
SARASOTA	2,956	177	213	256	310	343	260	224	175	179	308	288	223
SEMINOLE	3,117	147	241	261	304	320	268	304	192	217	342	254	267
SUMTER	292	15	25	25	28	27	28	35	33	18	25	17	16
SUWANNEE	260	19	23	15	23	22	30	22	18	23	12	24	29
TAYLOR	178	9	12	18	19	19	17	16	20	11	14	8	15
UNION	101	4	19	15	12	9	8	10	3	11	10	0	0
VOLUSIA	3,652	232	268	323	343	369	352	342	244	245	335	329	270
WAKULLA	217	14	16	23	20	18	24	19	10	12	20	24	17
WALTON	1,142	31	30	57	136	157	151	83	112	110	153	78	44
WASHINGTON	159	5	10	19	14	16	11	15	8	13	17	15	16

TABLE M-2: MARRIAGES BY RACE OF GROOM AND BRIDE, FLORIDA, 2005

RACE OF GROOM	RACE OF BRIDE										
	TOTAL	WHITE	BLACK	AMERICAN INDIAN	CHINESE	JAPANESE	HAWAIIAN	FILIPINO	OTHER ASIAN/PAC ISL	OTHER ENTRIES	UNK
TOTAL	158,192	122,660	20,529	427	48	14	26	72	2,881	5,821	5,714
WHITE	122,169	116,523	1,464	278	29	10	23	42	1,426	1,221	1,153
BLACK	22,351	3,052	18,568	36	1	0	1	6	129	285	273
AMERICAN INDIAN	468	313	28	95	0	0	0	1	11	12	8
CHINESE	26	10	0	0	15	0	0	0	0	1	0
JAPANESE	7	5	0	0	0	2	0	0	0	0	0
HAWAIIAN	33	29	1	0	0	0	1	0	0	1	1
FILIPINO	36	12	0	1	0	0	0	19	4	0	0
OTH ASIAN/PAC ISL	1,968	595	66	9	1	0	0	1	1,263	18	15
OTHER ENTRIES	5,627	1,093	209	5	2	2	0	3	28	4,237	48
UNK	5,507	1,028	193	3	0	0	1	0	20	46	4,216

TABLE M-3: DISSOLUTIONS* OF MARRIAGE BY DURATION OF MARRIAGE IN YEARS AND NUMBER OF MINOR CHILDREN AFFECTED, FLORIDA, 2005

DURATION IN YEARS	NUMBER OF MINOR CHILDREN AFFECTED								
	TOTAL	NONE	ONE	TWO	THREE	FOUR	FIVE	SIX+	UNK
TOTAL	81,287	47,062	16,197	11,256	2,999	517	88	61	3,107
<1	2,891	2,533	131	51	11	3	0	0	162
1	5,197	4,288	495	103	19	6	1	2	283
2	6,250	4,861	887	204	24	3	1	1	269
3	6,180	4,521	1,047	309	33	7	1	3	259
4	5,868	3,820	1,289	423	80	15	2	1	238
5-9	20,360	10,728	4,870	3,217	684	77	15	11	758
10-14	11,365	4,263	2,756	2,903	876	151	24	12	380
15-19	7,404	2,311	1,661	2,203	779	167	28	18	237
20-24	5,018	2,355	1,345	882	220	41	9	4	162
25-29	2,656	1,873	461	172	30	10	1	3	106
30-34	1,417	1,203	103	36	7	1	1	1	65
35-39	745	676	23	7	6	0	0	1	32
40>	627	563	16	6	0	2	0	0	40
UNK	5,309	3,067	1,113	740	230	34	5	4	116

*Includes divorces and annulments.

TABLE M-4: DISSOLUTIONS* OF MARRIAGE BY MONTH, BY COUNTY, FLORIDA, 2005

	TOTAL	JAN	FEB	MAR	APR	MAY	JUN	JUL	AUG	SEP	OCT	NOV	DEC
FLORIDA	81,287	6,473	5,947	6,769	7,412	7,183	7,579	6,263	7,683	7,385	5,458	6,723	6,411
ALACHUA	835	44	48	75	90	50	84	71	78	63	64	93	75
BAKER	101	11	11	7	5	9	8	7	6	11	11	7	8
BAY	822	76	57	50	69	96	48	73	89	64	73	75	52
BRADFORD	93	8	14	5	1	3	12	0	8	12	14	11	5
BREVARD	1,360	102	117	101	148	118	120	98	117	122	102	122	93
BROWARD	8,596	623	686	741	939	884	804	657	783	846	351	684	598
CALHOUN	64	1	4	5	14	6	3	2	10	6	3	5	5
CHARLOTTE	599	14	46	64	46	39	76	28	89	55	48	55	39
CITRUS	544	50	31	59	41	55	56	41	50	53	38	38	32
CLAY	755	55	63	41	63	67	77	41	79	71	64	72	62
COLLIER	1,306	95	95	103	121	133	130	62	149	114	89	113	102
COLUMBIA	327	25	31	26	37	19	26	32	34	19	22	30	26
MIAMI-DADE	14,052	1,152	1,022	1,265	1,236	1,353	1,476	1,154	1,317	1,285	728	991	1,073
DESOTO	174	8	15	13	14	18	22	16	15	19	9	20	5
DIXIE	54	2	7	4	7	11	3	5	3	2	4	6	0
DUVAL	4,350	323	281	370	375	381	350	319	373	415	376	380	406
ESCAMBIA	1,361	112	103	120	122	137	89	76	129	148	138	84	103
FLAGLER	263	25	20	27	13	31	20	18	20	22	18	28	21
FRANKLIN	31	0	0	3	1	2	5	3	2	6	2	5	2
GADSDEN	114	16	2	13	11	8	8	12	7	12	8	11	6
GILCHRIST	79	4	2	13	2	6	8	1	14	4	12	7	6
GLADES	21	0	1	2	2	0	1	2	6	2	1	3	1
GULF	53	4	0	10	7	2	3	4	6	5	3	5	4
HAMILTON	46	3	4	3	4	7	7	0	5	2	4	4	3
HARDEE	80	6	4	5	10	10	12	6	7	7	2	9	2
HENDRY	144	14	12	15	15	17	9	11	12	7	15	7	10
HERNANDO	387	32	26	34	38	34	35	46	25	28	28	27	34
HIGHLANDS	327	34	30	24	23	30	26	32	29	25	25	24	25
HILLSBOROUGH	5,830	435	453	459	480	457	537	463	570	568	444	529	435
HOLMES	81	3	8	11	13	6	5	5	9	4	6	7	4
INDIAN RIVER	546	57	38	47	38	46	55	37	42	45	45	50	46
JACKSON	179	8	20	1	15	19	35	0	19	12	11	15	24
JEFFERSON	48	2	5	11	1	5	6	3	3	2	2	3	5
LAFAYETTE	31	0	4	1	2	5	0	2	5	3	2	5	2
LAKE	953	72	77	87	86	66	93	71	78	81	71	89	82
LEE	2,127	131	138	171	156	195	168	264	215	148	152	199	190
LEON	989	80	60	101	92	78	99	68	82	90	76	87	76
LEVY	166	11	14	12	15	13	21	13	8	15	14	15	15
LIBERTY	34	2	3	8	2	1	5	1	2	2	2	2	4
MADISON	56	4	3	4	2	10	5	1	5	11	6	4	1
MANATEE	1,062	91	81	90	77	98	91	69	101	89	106	96	73
MARION	1,330	131	84	104	116	112	102	115	138	118	111	108	91
MARTIN	550	62	47	40	65	39	43	36	65	23	47	39	44
MONROE	456	44	38	34	35	42	38	41	34	45	15	51	39
NASSAU	311	21	25	19	30	27	27	18	30	27	26	36	25
OKALOOSA	1,351	110	117	129	126	111	123	99	123	117	96	110	90
OKEECHOBEE	125	5	15	14	10	9	14	7	13	13	12	10	3
ORANGE	4,814	427	231	347	446	418	476	394	452	460	365	478	320
OSCEOLA	1,373	83	86	128	120	120	141	131	163	114	98	75	114
PALM BEACH	5,297	462	433	359	607	387	502	379	509	505	236	371	547
PASCO	1,753	151	131	140	162	151	147	97	185	140	136	148	165
PINELLAS	3,827	298	301	315	324	320	362	262	370	318	289	346	322
POLK	2,218	137	176	143	178	160	182	225	194	241	182	199	201
PUTNAM	336	38	15	39	29	46	19	44	24	22	19	27	14
SAINT JOHNS	635	53	42	54	57	58	56	47	54	63	50	65	36
SAINT LUCIE	872	65	62	78	69	67	88	64	61	93	60	67	98
SANTA ROSA	563	47	21	54	51	43	56	33	56	53	47	48	54
SARASOTA	1,610	172	139	159	162	117	120	118	153	137	96	127	110
SEMINOLE	1,681	182	117	154	128	161	160	112	161	135	110	153	108
SUMTER	189	16	8	17	16	15	17	18	17	15	11	16	23
SUWANNEE	145	9	13	15	17	10	13	7	17	11	2	16	15
TAYLOR	102	10	12	5	12	11	6	7	11	4	11	5	8
UNION	41	4	1	7	3	2	1	0	6	0	7	4	6
VOLUSIA	2,231	173	173	177	181	184	213	167	194	193	202	183	191
WAKULLA	100	3	11	11	5	8	8	6	20	5	9	6	8
WALTON	246	27	10	18	23	23	19	18	26	30	21	14	17
WASHINGTON	91	8	3	8	7	17	8	4	6	8	11	4	7

*Includes divorces and annulments.